

# Geospatial Data for Evaluation

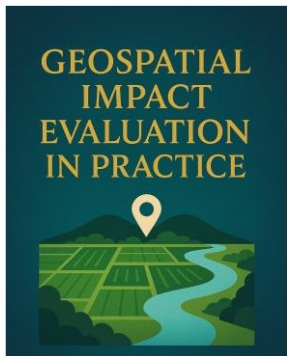
30 APRIL 2026

**JEAN-CLAUDE PIRES / INGRID DALLMANN**

*Evaluation and Learning Department, AFD*

# High potential, limited adoption

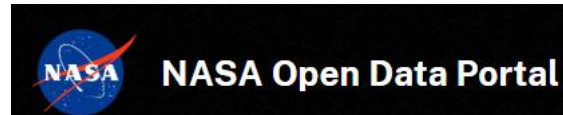
- Massive open geospatial data (Copernicus 20 TB /day, Landsat thousands of public datasets)
- Mature evaluation methods and analytical tools



PROGRAMME OF THE  
EUROPEAN UNION



OpenStreetMap



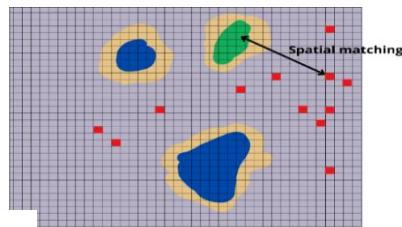
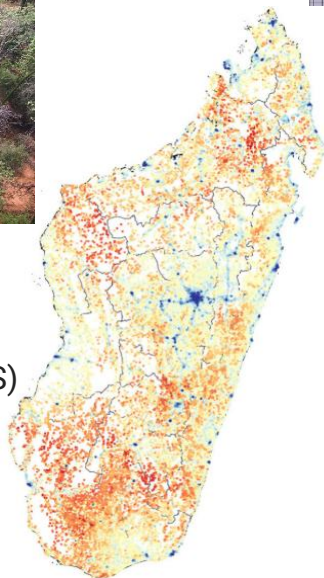
mapme.biodiversity: Efficient Monitoring of Global Biodiversity Portfolios

# Measuring Impact from Space

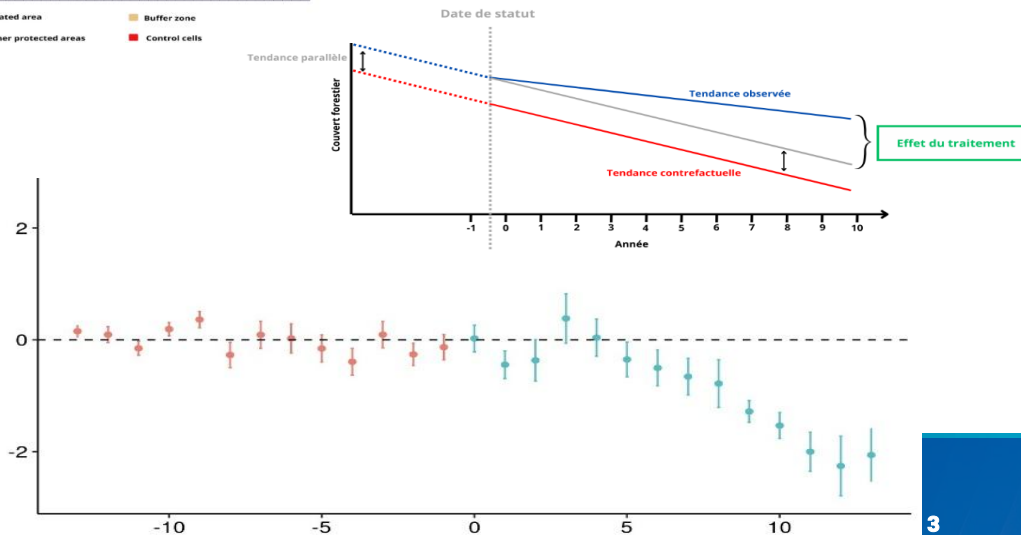
- Counterfactual analysis at scale and on the long terme
- Combines: satellite data + surveys + project information + causal methods



- DHS survey
- Satellites (VIIRS, Google SM)
- Population (HRLS)
- OpenStreetMap



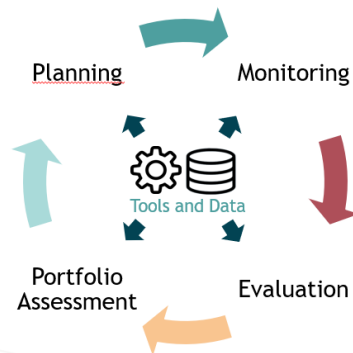
Treated area      Buffer zone  
Other protected areas      Control cells



# From Innovation to institutional practice

## Inside institutions

- Push by evaluation and innovation teams
- Fragmented
- Still uneven uptake



## Across institutions

- Strong partnerships
- Capacity building

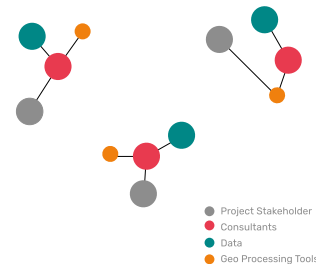


MOOC

DONNÉES GÉOSPATIALES AU SERVICE DU  
DÉVELOPPEMENT DURABLE



Without MAPME



With MAPME

